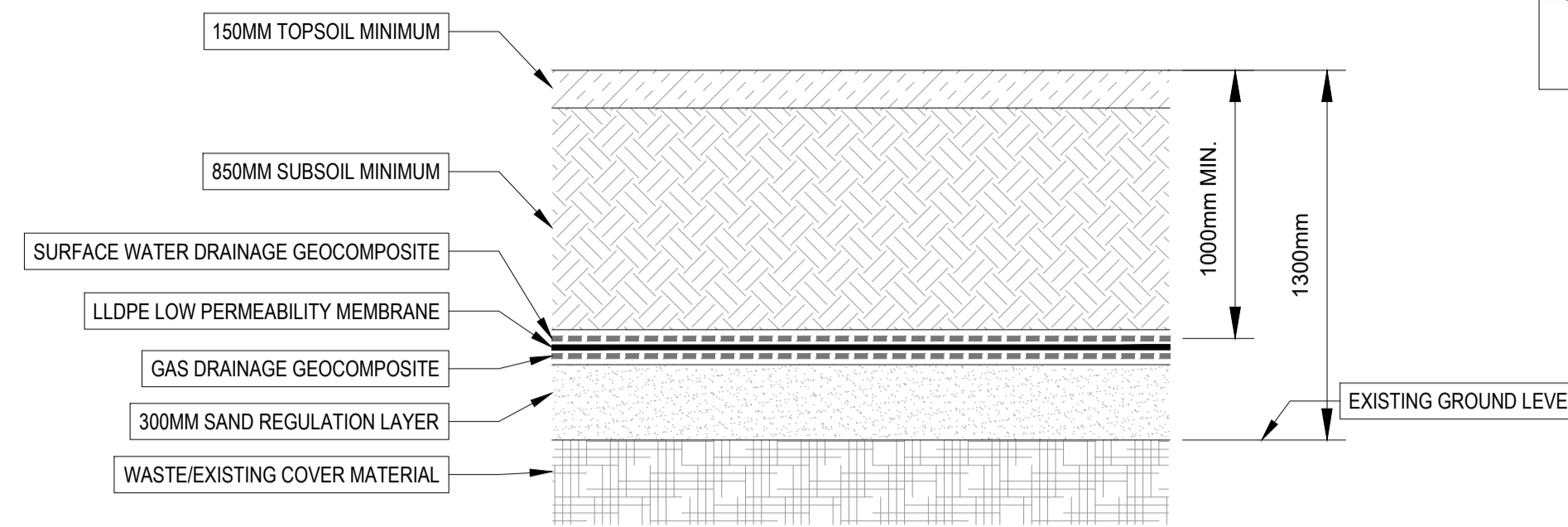
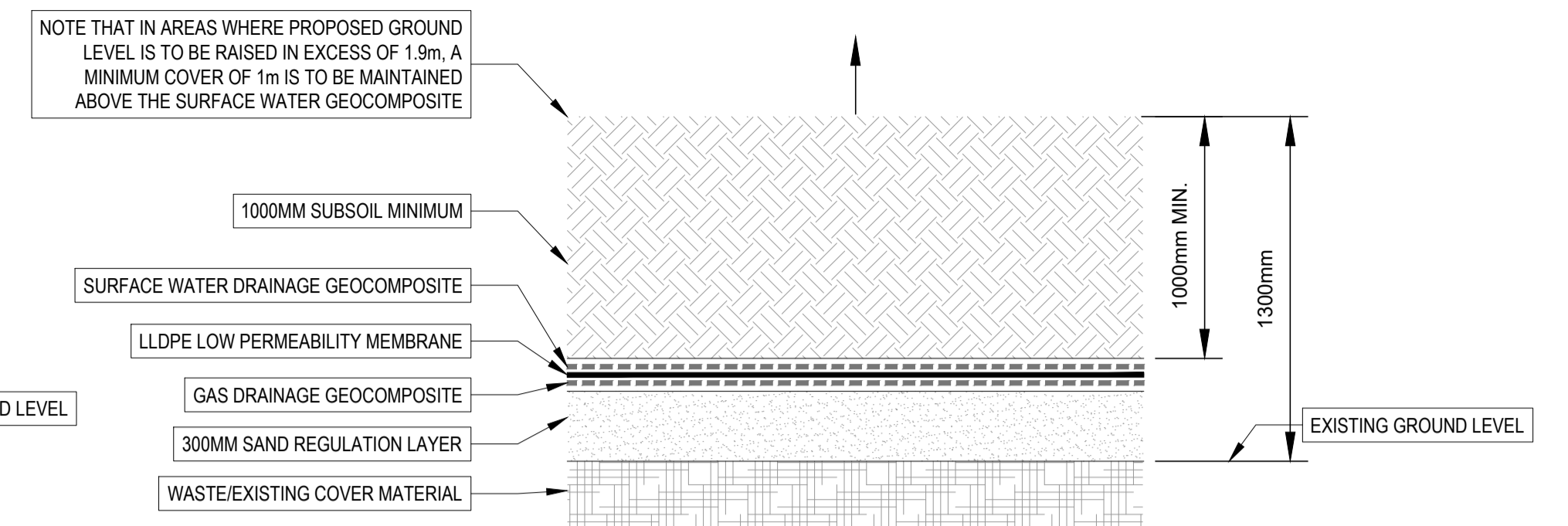


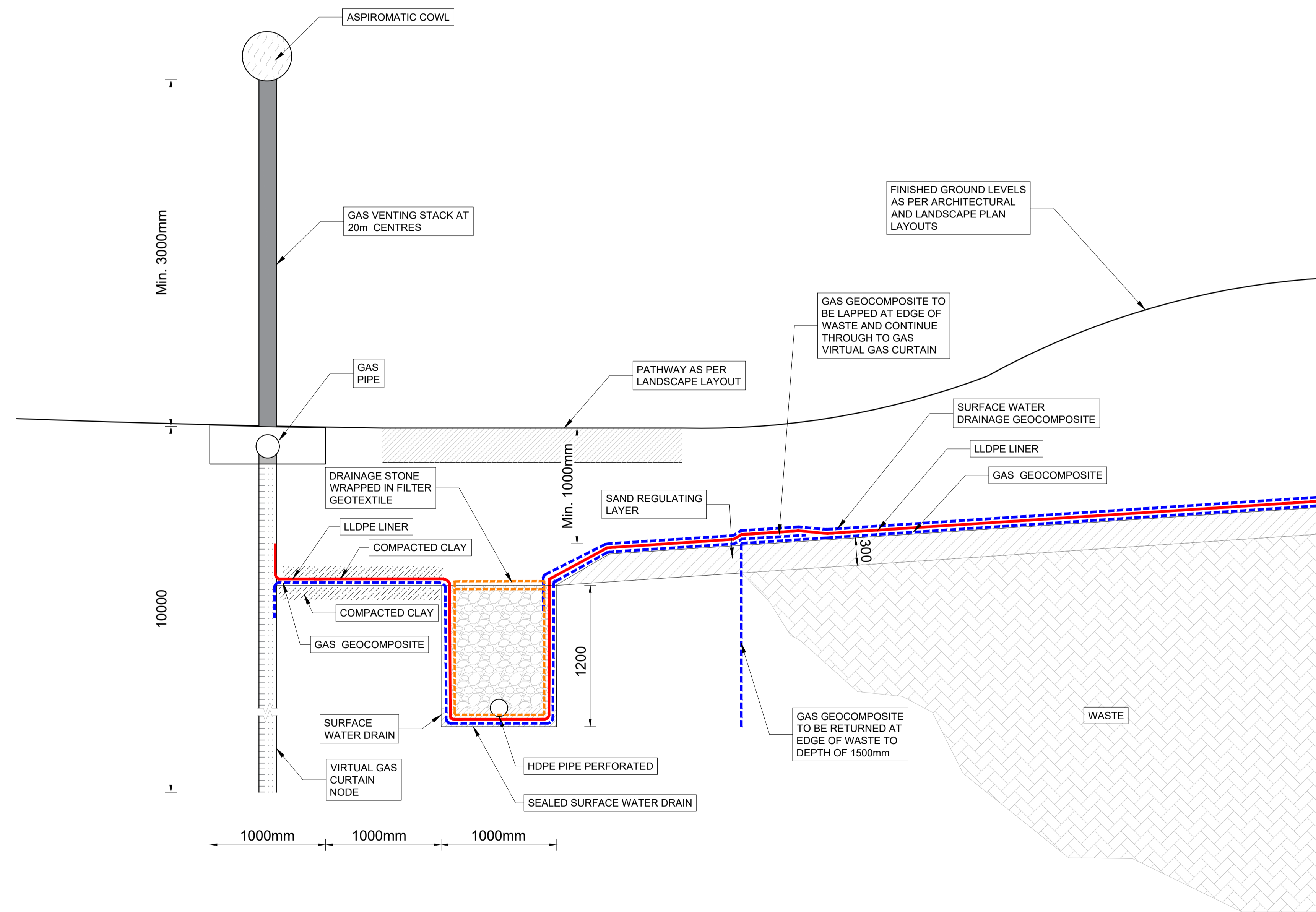
**CAPPING SYSTEM MAKE-UP IN AREAS TO RECEIVE ROADS OR PAVEMENTS**



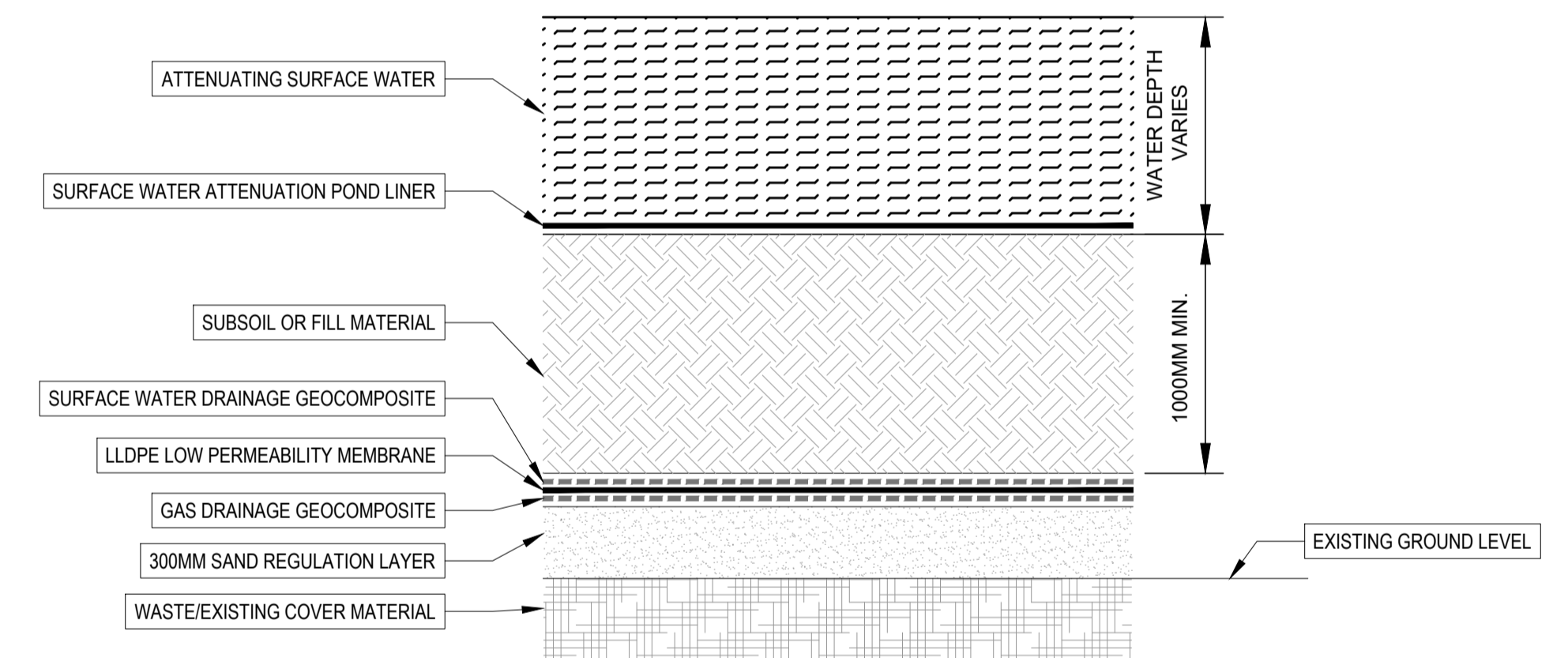
**MINIMUM CAPPING SYSTEM MAKE-UP**



**CAPPING SYSTEM MAKE-UP IN AREAS TO BE RAISED >1.3M ABOVE EXISTING GROUND LEVEL**



**TYPICAL EDGE OF WASTE CAPPING DETAIL SCALE 1:25 @A1 ; 1:50 @A3**



**CAPPING SYSTEM MAKE-UP IN AREAS TO RECEIVE SURFACE WATER ATTENUATION PONDS**

X:\CP19001 - Fassaro 2019\9.0 Drawings\DG\CP19001\DC00004\_S3\_P02\_Typical Capping Details.dwg



**General Notes**

(i) Hard copies, dwf and pdf will form a controlled issue of the drawing. All other formats (dwg etc.) are deemed to be an uncontrolled issue and any work carried out based on these files is at the recipient's own risk. RPS will not accept any responsibility for any errors from the use of these files, either by human error by the recipient, listing of the un-dimensioned measurements, compatibility with the recipient's software, and any errors arising when these files are used to aid the recipient's drawing production, or setting out on site.

(ii) DO NOT SCALE, use figured dimensions only.

(iii) This drawing is the property of RPS, it is a project confidential classified document. It must not be copied used or its contents divulged without prior written consent. The needs and expectations of client and RPS must be considered when working with this drawing.

(iv) Information including topographical survey, geotechnical investigation and utility detail used in the design have been provided by others.

(v) All Levels refer to Ordnance Survey Datum, Mean Head.

Rev	Date	Drn	Chk	App	Amendment / Issue	App
P02	08/03/22	BC	BC		PLANNING ISSUE	ML
P01	20/04/20	DR	KE		ISSUE FOR REVIEW	KG

Model File Identifier



Scale	1:25 @ A1 1:50 @ A3	Project	FASSAROE PHASE 1 DEVELOPMENT
Created on	20/04/2020	Title	TYPICAL CAPPING DETAILS
Sheets	01 of 01	Status	S3
File Identifier	CP19001-RPS-00-XX-DR-C-DG0004-01	Rev	P02